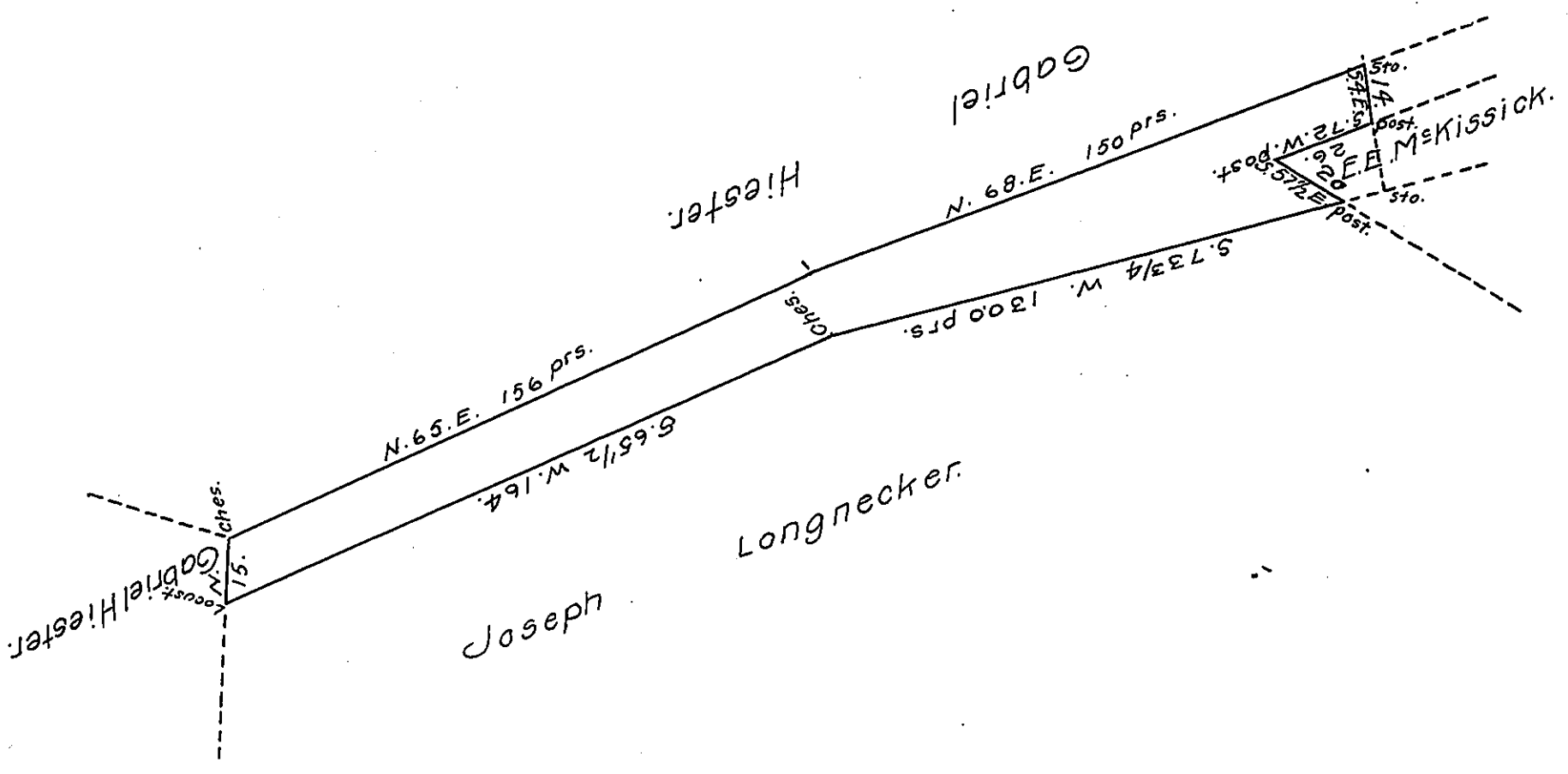


41



A Draft of a tract of land situated in the Township of Middle Paxton and County of Dauphin, containing (30.36) Thirty and $\frac{36}{100}$ acres,perches and allowance of six per cent. for roads, etc. Surveyed the First day of January 1914, in pursuance of a warrant granted to the Peoples Ice Co., dated the Eighteenth day of December, 1913.

To Hon. Henry Houck, } J. M. Whitlock,
 Secretary of Internal Affairs } County Surveyor.

IN TESTIMONY that the above is a copy of the original remaining on file in the Department of Internal Affairs of Pennsylvania, made conformably to an Act of Assembly approved the 16th day of February, 1833, I have hereunto set my Hand and caused the Seal of said Department to be affixed at Harrisburg, this twenty second day of May, 1914.

Henry Houck
 Secretary of Internal Affairs.